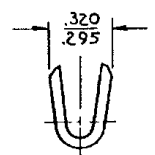
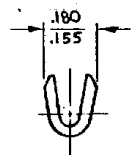
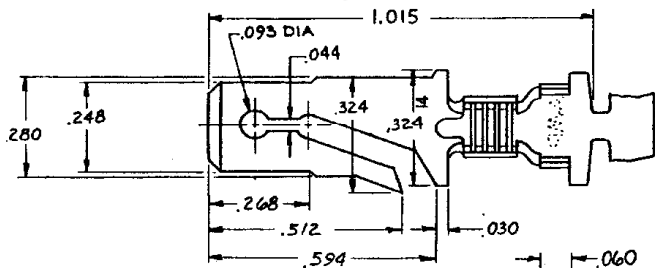
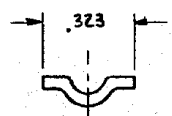
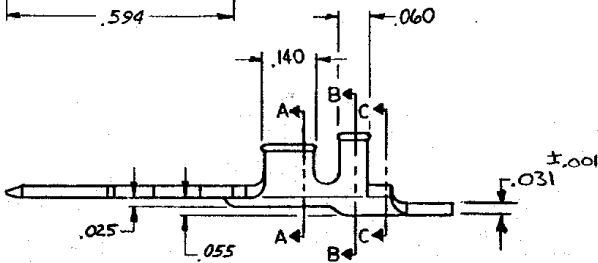


REV	DESCRIPTION	DATE	DWN	APVD
J1	REVISED PER ECR-14-015005	04NOV2014	NK	DH




SECTION A-A

SECTION B-B



SECTION C-C

FOR INTERNAL PROCESSING USE

641256-3	NICKEL	.100-.142	18-14 AWG	640416-3
	TIN	.100-.142	18-14 AWG	640416-4
641256-1	NONE	.100-.142	18-14 AWG	640416-2
LOOSE PIECE	FINISH	INSULATION RANGE	WIRE SIZE	PART NO
UNLESS OTHERWISE SPECIFIED DIMENSIONS ARE IN INCHES. TOLERANCES ON: DECIMALS ±.015 ANGLES		CONTRACT NO		
DR <i>S. J. West 6/22/77</i>		 TE Connectivity		
CHK <i>S. J. West 7/12/77</i>				
MATERIAL		NAME		
BRASS		"250" BLADE		
FINISH		SIZE	CODE IDENT NO	DRAWING NO
SEE TABLE		B	00779	C-640416
		SCALE	DIST	REV
			1 OF 1	J1